



It is important to read this user manual prior to using your new product for the first time.

# Important safety instructions

## IMPORTANT SAFETY INSTRUCTIONS

PLEASE READ AND SAVE FOR FUTURE REFERENCE

 <p>THE LIGHTNING FLASH AND ARROWHEAD WITHIN THE TRIANGLE IS A WARNING SIGN ALERTING YOU OF "DANGEROUS VOLTAGE" INSIDE THE PRODUCT.</p>	<b>CAUTION</b> RISK OF ELECTRIC SHOCK DO NOT OPEN  CAUTION: TO REDUCE THE RISK OF ELECTRIC SHOCK, DO NOT REMOVE COVER (OR BACK). NO USER-SERVICEABLE PARTS INSIDE. REFER SERVICING TO QUALIFIED SERVICE PERSONNEL.	 <p>THE EXCLAMATION POINT WITHIN THE TRIANGLE IS A WARNING SIGN ALERTING YOU OF IMPORTANT INSTRUCTIONS ACCOMPANYING THE PRODUCT.</p>
SEE MARKING ON BOTTOM / BACK OF PRODUCT		

**WARNING:** TO PREVENT FIRE OR ELECTRICAL SHOCK HAZARD, DO NOT EXPOSE THIS PRODUCT TO RAIN OR MOISTURE.

Some of the following information may not apply to your particular product; however, as with any electronic product, precautions should be observed during handling and use.

- Read these instructions.
- Keep these instructions.
- Heed all warnings.
- Follow all instructions.
- Do not use this apparatus near water.
- Clean only with dry cloth.
- Do not install near any heat sources such as radiators, heat registers, stoves, or other apparatus (including amplifiers) that produce heat.
- Only use attachments/accessories specified by the manufacturer.
- Refer all servicing to qualified service personnel. Servicing is required when the apparatus has been damaged in any way, such as power-supply cord or plug is damaged, liquid has been spilled or objects have fallen into the apparatus, the apparatus has been exposed to rain or moisture, does not operate normally, or has been dropped.

### ADDITIONAL SAFETY INFORMATION

- Apparatus shall not be exposed to dripping or splashing and no objects filled with liquids, such as vases, shall be placed on the apparatus.
- Do not attempt to disassemble the cabinet. This product does not contain customer serviceable components.
- The marking information is located at the back of apparatus.

## Important battery information

Warning: Your product contains a battery and charging system which is designed to work in temperatures that do not exceed 50°C (122°F). Leaving this product in a closed automobile or the trunk of an automobile where temperatures may exceed 50°C may result in permanent battery damage, fire, or explosion. Please remove your product from the automobile when you exit, do not place your product in the trunk of your automobile, and do not leave your product in any location where temperatures may exceed 50°C.

## Ecology

Your product must be disposed of properly according to local laws and regulations. Because this product contains a battery, the product must be disposed of separately from the household waste.

## Precautions for the unit

- Do not use the unit immediately after transportation from a cold place to a warm place; condensation problems may result.
- Do not store the unit near fire, places with high temperature or in direct sunlight. Exposure to direct sunlight or extreme heat (such as inside a parked car) may cause damage or malfunction.
- Do not expose to rain or moisture.
- Clean the unit with a soft cloth or a damp chamois leather. Never use solvents.
- The unit must only be opened by qualified personnel.

## Headset safety

To use a headset safely, please keep the following in mind:

- Do not play your headset at a high volume. Hearing experts advise against continuous extended play.
- If you experience ringing in your ears, turn down the volume or stop using the headset.
- Do not use a headset while driving a motorized vehicle or riding a bike. It may cause a traffic hazard and is illegal in many areas.
- Even if your headset is an open-air type designed to let you hear outside sounds, don't turn up the volume so high that can't hear sounds around you.

## FCC Information

This device complies with Part 15 of the FCC Rules. Operation is subject to the following two conditions: (1) this device may not cause harmful interference, and (2) this device must accept any interference received, including interference that may cause undesired operation.

**Note:** This equipment has been tested and found to comply with the limits for a Class B digital device, pursuant to Part 15 of FCC Rules. These limits are designed to provide reasonable protection against harmful interference in a residential installation. This equipment generates, uses, and can radiate radio frequency energy and, if not installed and used in accordance with the instructions, may cause harmful interference to radio communications.

However, there is no guarantee that interference will not occur in a particular installation. If this equipment does cause harmful interference to radio or television reception, which can be determined by turning the equipment off and on, the user is encouraged to try to correct the interference by one or more of the following measures:

- Reorient or relocate the receiving antenna.
- Increase the separation between the equipment and receiver.
- Connect the equipment into an outlet on a circuit different from that to which the receiver is connected.
- Consult the dealer or an experienced radio/TV technician for help.

Changes or modifications not expressly approved by VOXX Accessories Corporation could void the user's authority to operate the equipment.

Manufacturer/Responsible Party  
VOXX Accessories Corporation  
3502 Woodview Trace, Suite 220,  
Indianapolis, IN 46268

1-317-810-4880 (No technical /product support is available via this number. This phone number is for regulatory matters only.)

Visit [www.rcaaudiovideo.com](http://www.rcaaudiovideo.com) for technical support



### Industry Canada Regulatory Information

CAN ICES-3 (B)/NMB-3 (B)

**Avis d'Industrie Canada**

CAN ICES-3 (B)/NMB-3 (B)

# Contents

## Important safety instructions

IMPORTANT SAFETY INSTRUCTIONS .....	1
Important battery information .....	2
Ecology .....	2
Precautions for the unit .....	2
Headset safety .....	2

## FCC Information..... 3

## Contents ..... 4

## End user license agreement ..... 7

## Before you begin

Copyright warning.....	10
Back up your data .....	10
Unpacking your player .....	10
Computer system requirements.....	10
Connecting to the computer .....	11
Charging the player.....	11

## Managing files on your RCA Player

Deleting files from the player.....	12
Disconnecting the player from the PC.....	12

## General controls

Turning the player on and off.....	13
Resetting the player .....	13

## Using the menus

Menu types.....	14
Menu navigation .....	14
The Home menu.....	15

## Music

Playing music files.....	16
Music playback.....	16

**Video**

Playing video files ..... 18  
Video viewing ..... 18

**Record**

Start recording ..... 19  
Recording ..... 19

**Voice**

Playback recorded files ..... 20  
Voice ..... 20

**FM Radio**

Playing FM radio ..... 21  
Storing and recalling preset stations ..... 21  
Playing back FM radio recordings ..... 22

**Photo**

Viewing pictures ..... 23  
Viewing ..... 23

**E-Book**

Reading text ..... 24  
Reading ..... 24

**Settings**

Changing the Player’s settings ..... 25  
Clock ..... 25  
Language ..... 25  
Memory info ..... 25  
Firmware version ..... 25

**Additional information**

Tips and troubleshooting ..... 26  
Visiting RCA website ..... 28  
Technical specification ..... 28  
Specifications ..... 28

**Warranty information**

12 Month Limited Warranty ..... 29

# End user license agreement

## VOXX INTERNATIONAL CORPORATION END USER LICENSE AGREEMENT

**IMPORTANT: READ CAREFULLY BEFORE DOWNLOADING OR INSTALLING THIS SOFTWARE!**

### VOXX INTERNATIONAL CORPORATION EULA

THIS END USER LICENSE AGREEMENT (THIS "EULA") IS A LEGAL AGREEMENT BETWEEN YOU AND VOXX INTERNATIONAL CORPORATION AND, AS APPLICABLE, ANY VOXX INTERNATIONAL CORPORATION SUBSIDIARY, AS DEFINED BELOW (COLLECTIVELY "VOXX"), FOR THE RCA BRANDED PORTABLE DIGITAL AUDIO/VIDEO DEVICE APPLICATION/DRIVER SOFTWARE PROGRAM WHICH MAY INCLUDE ASSOCIATED SOFTWARE COMPONENTS, SOFTWARE LICENSED BY VOXX FROM THIRD PARTIES ("LICENSORS") AND ASSOCIATED DOCUMENTATION, IF ANY (COLLECTIVELY, THE "PROGRAM"). THIS EULA CONTAINS IMPORTANT LEGAL LIMITATIONS, RESTRICTIONS AND DISCLAIMERS, AND ALSO SPECIFIES THE DURATION OF YOUR LICENSE.

BY INSTALLING THE PROGRAM OR CLICKING ON THE ACCEPTANCE BUTTON OF THE PROGRAM, COPYING OR OTHERWISE USING THE PROGRAM, YOU ACKNOWLEDGE AND AGREE THAT YOU HAVE READ THIS EULA, UNDERSTAND IT, AND AGREE TO BE BOUND BY ITS TERMS AND CONDITIONS. THIS PROGRAM IS PROTECTED BY COPYRIGHT LAWS AND INTERNATIONAL COPYRIGHT TREATIES, AS WELL AS OTHER INTELLECTUAL PROPERTY LAWS AND TREATIES. YOU MAY USE THE PROGRAM ONLY IN ACCORDANCE WITH THIS EULA, AND ANY SUCH USE IS HEREBY UNDERSTOOD TO BE CONDITIONAL UPON YOUR SPECIFIC AGREEMENT TO THE UNMODIFIED TERMS SET FORTH HEREIN. IF YOU DO NOT AGREE WITH ALL OF THE TERMS OF THIS EULA, CLICK ON THE REJECTION BUTTON AND/OR DO NOT INSTALL THE PROGRAM AND/OR DO NOT USE THE PROGRAM.

#### 1. LICENSE

- (a) Under this EULA, you are granted a non-exclusive, non-sublicenseable, non-assignable and non-transferable (except as expressly set forth below) license (i) to use and install the Program on a single workstation, and (ii) to make one (1) copy of the Program into any machine-readable form for backup of the Program, provided the copy contains all of the original Program's proprietary notices.
- (b) You may transfer the Program and license to another party only as a part of the RCA branded Portable Digital Audio/Video Device ("A/V Device"), and only if the other party agrees to accept the terms and conditions of this EULA. If you transfer the Program, you must at the same time either transfer all copies to the same party or destroy any copies not transferred.
- (c) The terms of this EULA will govern any software upgrades or updates provided by VOXX that replace and/or supplement the original Program, unless such upgrade or update is accompanied by separate license terms and conditions in which case the terms of that separate license will govern. You acknowledge and agree that VOXX may automatically download upgrades or updates to the Program software to your computer in order to update, enhance, and/or further develop the Program.

#### 2. LICENSE RESTRICTIONS

- (a) Except for the licenses expressly granted to you in this EULA, no other licenses or rights are granted or implied.
- (b) You may not (i) make the Program available over a network where it could be used by multiple computers at the same time; (ii) modify, translate, reverse engineer, decompile, disassemble (except to the extent that this restriction is expressly prohibited by law), or create derivative works based upon the Program; (iii) copy the Program, except as expressly permitted herein; (iv) remove or alter any copyright

notices on all copies of the Program; or (v) rent, lease or lend the Program. You agree that you shall only use the Program in a manner that complies with all applicable laws in the jurisdictions in which you use the Program, including, but not limited to, applicable restrictions concerning copyright and other intellectual property rights.

(c) The Program may contain pre-release code that does not perform at the level of a final code release. In such case, the Program may not operate properly. Updated versions of the Program may be downloaded from [www.rcaaudiovideo.com/downloads](http://www.rcaaudiovideo.com/downloads)

(d) VOXX is not obligated to provide support services for the Program.

(e) The Program is provided with "RESTRICTED RIGHTS". Use, duplication, or disclosure by the U.S.

Government is subject to restrictions as set forth in subparagraph (c)(1)(ii) of DFARS 252.227-7013, or FAR 52.227-19, or in FAR 52.227-14 Alt. III, as applicable.

### **3. TERM AND TERMINATION**

(a) Your license is effective on the date you accept this EULA and remains in effect until this EULA is terminated by either party.

(b) You may terminate this EULA and the associated license, without any notice or delay, by destroying or permanently erasing the Program and all copies thereof.

(c) If you fail to comply with any of the terms of this EULA, in whole or part, your license will automatically terminate without notice from VOXX.

(d) Upon termination of this EULA and your associated license, you shall cease all use of the Program and destroy or permanently erase the Program and all full or partial copies thereof.

### **4. WARRANTY DISCLAIMER**

THE PROGRAM IS PROVIDED "AS IS" WITHOUT WARRANTY OF ANY KIND, EITHER EXPRESSED OR IMPLIED, INCLUDING, BUT NOT LIMITED TO THE IMPLIED WARRANTIES OF MERCHANTABILITY, FITNESS FOR A PARTICULAR PURPOSE, TITLE OR NON-INFRINGEMENT. THE ENTIRE RISK AS TO THE QUALITY AND PERFORMANCE OF THE PROGRAM IS WITH YOU. SHOULD THE PROGRAM PROVE DEFECTIVE, YOU (AND NOT VOXX, ITS SUPPLIERS, OR ITS DEALERS) ASSUME THE ENTIRE COST FOR ALL NECESSARY REPAIR OR CORRECTION.

This exclusion of warranty may not be allowed under some applicable laws. As a result, the above exclusion may not apply to you, and you may have other rights depending on the law that applies to you.

### **5. OWNERSHIP RIGHTS**

All title and intellectual property rights, including but not limited to copyrights, in and to the Program and any copies thereof are owned by VOXX, its Licensors or its suppliers. All title and intellectual property rights in and to the content which may be accessed through use of the Program is the property of the respective content owner and may be protected by applicable copyright or other intellectual property laws and treaties. This license grants you no rights to use such content. All rights not expressly granted are reserved by VOXX or its Licensors.

### **6. LIMITATION OF LIABILITY**

(a) TO THE MAXIMUM EXTENT PERMITTED BY APPLICABLE LAW, IN NO EVENT SHALL VOXX, OR ITS DEALERS BE LIABLE FOR ANY SPECIAL, INCIDENTAL, INDIRECT, OR CONSEQUENTIAL DAMAGES WHATSOEVER (INCLUDING, WITHOUT LIMITATION, DAMAGES FOR LOSS OF PROFITS, BUSINESS INTERRUPTION, CORRUPTION OF FILES, LOSS OF BUSINESS INFORMATION, OR ANY OTHER PECUNIARY LOSS) REGARDLESS OF CAUSE OR FORM OF ACTION, INCLUDING CONTRACT, TORT, OR NEGLIGENCE, ARISING OUT OF YOUR USE OF OR INABILITY TO USE THE PROGRAM, EVEN IF VOXX HAS BEEN ADVISED OF THE POSSIBILITY OF SUCH



DAMAGES. BECAUSE SOME STATES AND JURISDICTIONS DO NOT ALLOW THE EXCLUSION OR LIMITATION OF LIABILITY OF CONSEQUENTIAL OR INCIDENTAL DAMAGES, THE ABOVE LIMITATION MAY NOT APPLY TO YOU. (b) YOU ASSUME RESPONSIBILITY FOR THE SELECTION OF THE APPROPRIATE PROGRAM TO ACHIEVE YOUR INTENDED RESULTS, AND FOR THE INSTALLATION, USE, AND RESULTS OBTAINED.

## **7. WINDOWS MEDIA**

The software embedded within your A/V Device (the "Device Firmware") contains software licensed from Microsoft that enables you to play Windows Media Audio (WMA) files ("WMA Software"). The WMA Software is licensed to you for use with your A/V Device under the following conditions. By installing and using this version of the Device Firmware, you are agreeing to these conditions. IF YOU DO NOT AGREE TO THE END USER CONDITIONS OF THIS SECTION 7, DO NOT INSTALL OR USE THIS VERSION OF THE DEVICE FIRMWARE.

The WMA Software is protected by copyright and other intellectual property laws. This protection also extends to documentation for the WMA Software, whether in written or electronic form.

GRANT OF LICENSE: The WMA Software is only licensed to you as follows:

You may use this version of the Device Firmware containing the WMA Software only as such use relates to your A/V Device.

You may not reverse engineer, decompile, or disassemble the WMA Software, except and only to the extent that such activity is expressly permitted by applicable law.

You may transfer your right to use the Device Firmware only as part of a sale or transfer of your A/V Device, on the condition that the recipient agrees to the conditions set forth herein. If the version of the Device Firmware that you are transferring is an upgrade, you must also transfer all prior versions of the Device Firmware that you have which include the WMA Software.

MICROSOFT IS NOT PROVIDING ANY WARRANTY OF ANY KIND TO YOU FOR THE WMA SOFTWARE, AND MICROSOFT MAKES NO REPRESENTATION CONCERNING THE OPERABILITY OF THE WMA SOFTWARE.

The WMA Software is of U.S. origin. Any export of this version of the Device Firmware must comply with all applicable international and national laws, including the U.S. Export Administration Regulations, that apply to the WMA Software incorporated in the Device Firmware.

Content owners use Windows Media digital rights management technology ("WMDRM") to protect their intellectual property, including copyrights. This device uses WMDRM software to access WMDRM-protected content. If the WMDRM software fails to protect the content, content owners may ask Microsoft to revoke the software's ability to use WMDRM to play or copy protected content. Revocation does not affect unprotected content. When you download licenses for protected content, you agree that Microsoft may include a revocation list with the licenses. Content owners may require you to upgrade WMDRM to access their content. If you decline to accept an upgrade, you will not be able to access content that requires the upgrade.

## **8. THIRD PARTY SOFTWARE**

ANY THIRD PARTY SOFTWARE THAT MAY BE PROVIDED WITH THE PROGRAM IS INCLUDED FOR USE AT YOUR OPTION. IF YOU CHOOSE TO USE SUCH THIRD PARTY SOFTWARE, THEN SUCH USE SHALL BE GOVERNED BY SUCH THIRD PARTY'S LICENSE AGREEMENT, AN ELECTRONIC COPY OF WHICH WILL BE INSTALLED IN THE

APPROPRIATE FOLDER ON YOUR COMPUTER UPON INSTALLATION OF THE SOFTWARE. VOXX IS NOT RESPONSIBLE FOR ANY THIRD PARTY S SOFTWARE AND SHALL HAVE NO LIABILITY FOR YOUR USE OF THIRD PARTY SOFTWARE.

## **9. GOVERNING LAW**

If you acquired this A/V Device in the United States, this EULA shall be governed and construed in accordance with the laws of the State of Indiana, U.S.A. without regard to its conflict of laws principles. If you acquired this A/V Device outside the United States or the European Union, then local law may apply.

## **10. GENERAL TERMS**

This EULA can only be modified by a written agreement signed by you and VOXX, and changes from the terms and conditions of this EULA made in any other manner will be of no effect. If any portion of this EULA shall be held invalid, illegal, or unenforceable, the validity, legality, and enforceability of the remainder of the Agreement shall not in any way be affected or impaired thereby. This EULA is the complete and exclusive statement of the agreement between you and VOXX, which supersedes all proposals or prior agreements, oral or written, and all other communications between you and VOXX, relating to the subject matter of this hereof. VOXX S Licensors shall be considered third party beneficiaries of this Agreement and shall have the right to enforce the terms herein.

"VOXX SUBSIDIARY" shall mean any person, corporation, or other organization, domestic or foreign, including but not limited to subsidiaries, that is directly or indirectly controlled by Vox International Corporation including, but not limited to, Vox Accessories Corporation and Audiovox Electronics Corporation. For purposes of this definition only, the term "control" means the possession of the power to direct or cause the direction of the management and policies of an entity, whether by ownership of voting stock or partnership interest, by contract, or otherwise, including direct or indirect ownership of at least fifty percent (50%) of the voting interest in the entity in question.

## **11. CONSENT TO USE OF DATA**

You agree that Vox and its subsidiaries may collect and use technical and related information that does not personally identify you, including but not limited to offers opted into by you with Vox partners, technical information about your computer, system and application software, IP address and peripherals, that is gathered periodically to facilitate the provision of software updates, product support and other services to you (if any) related to the Software and to verify compliance with the terms of this License. Vox may use this information, as long as it is in a form that does not personally identify you, to improve our products or to provide services or technologies to you.

## Before you begin

### **Dear RCA Customer,**

Thank you for purchasing the player. This product will play mp3 and Windows Media™ audio (WMA) content.

### **Copyright warning**

This player is for your personal use only. Unauthorized recording or duplication of copyrighted material may infringe upon the rights of third parties and may be contrary to copyright laws.

### **Back up your data**

As with any portable player, you must back up the drive regularly. The manufacturer is not responsible for lost data.

### **Unpacking your player**

All of the items listed below should have been packed in the box with your player.

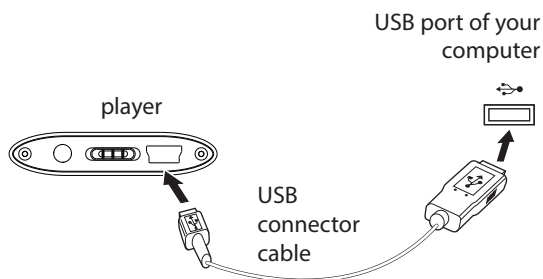
- RCA player (contains music management software installer and user manual pdf file)
- Quick Start Guide
- USB connector cable
- Earphones

### **Computer system requirements**

- Pentium III 500MHz or higher recommended
- Windows XP (service pack 1 or higher), Windows Vista, Windows 7, Windows 8, or Windows 10
- Internet Explorer 6.0 or higher with Internet access
- Windows Media Player 10 or higher
- 250MB or more free hard disk space for the software
- 128MB RAM (256MB recommended)
- CD-ROM drive capable of digital audio extraction
- USB port (2.0 recommended)
- Sound card

## Connecting to the computer

- Connect the player to your computer with the USB connector cable provided. The screen will light up automatically.
- The player will be labeled "RCA MP3". It will appear as a drive letter on your computer and behave as a detachable drive for file transfer.
- Before copying video files to your player, the files must be converted to .AMV file format for playback. The RCA AMV Converter installer is stored on the player. Go to **My Computer** (XP users) /Go to **Computer** (Vista, 7, and 8 users) in the Start menu, find and open the drive letter associated with the player (i.e. RCA MP3) and then double-click the **RCA\_AMVConverter\_setup.exe** to launch the installer.
- The software installer can be deleted from the player after installation to free up more storage space\*.



\*The latest software can be downloaded from [www.rcaaudiovideo.com](http://www.rcaaudiovideo.com).

- It may take several seconds for the player to be detected. Click **View -> Refresh** in My Computer or Windows Explorer to make sure the player has been detected.
- The player is capable of transferring files using USB 2.0. If a USB 2.0 port is available on your computer, use it to connect to your player. The player is still backward compatible with the older USB 1.1 ports; however, you will not be able to take full advantage of the potential speed increase.
- **IMPORTANT:** Do not disconnect the USB connection from either the PC or the player during the software installation.



## Charging the player

The battery should be fully charged before using your device for the first time. Use the supplied USB connector cable to connect it to your computer or other USB power source. Put the player's **OFF/ON** switch in the ON position. It should be **charged for at least 4 hours** before using for the first time.

**IMPORTANT: The player's OFF/ON switch must be in the ON position for the player to charge!**

# Managing files on your RCA Player

Before you begin using your RCA player, you'll want to copy your media files to the player. You can simply drag and drop files using Windows Explorer

Video files must be converted and transferred via RCA AMV Converter for playback on your player.



## Using Windows Explorer

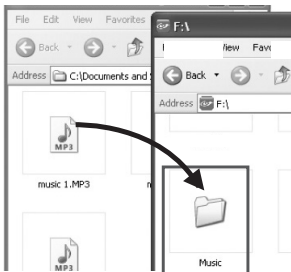
1. Open the player in Windows Explorer.



2. Drag and drop audio/video/photo/text files to the **MUSIC, VIDEO, PHOTO** or **EBOOK** folders of the player.

**Important:** The E-book reader supports .txt files only.

**Note:** In other operating systems, you can simply drag and drop files into the correct folder on the player.




## Deleting files from the player

You may delete any files transferred to the player.

1. Connect the player to your computer.
2. Open the player in Windows Explorer and then navigate to the folder containing the files.
3. Select the files you want to remove and then press the Delete key on the keyboard of your PC.

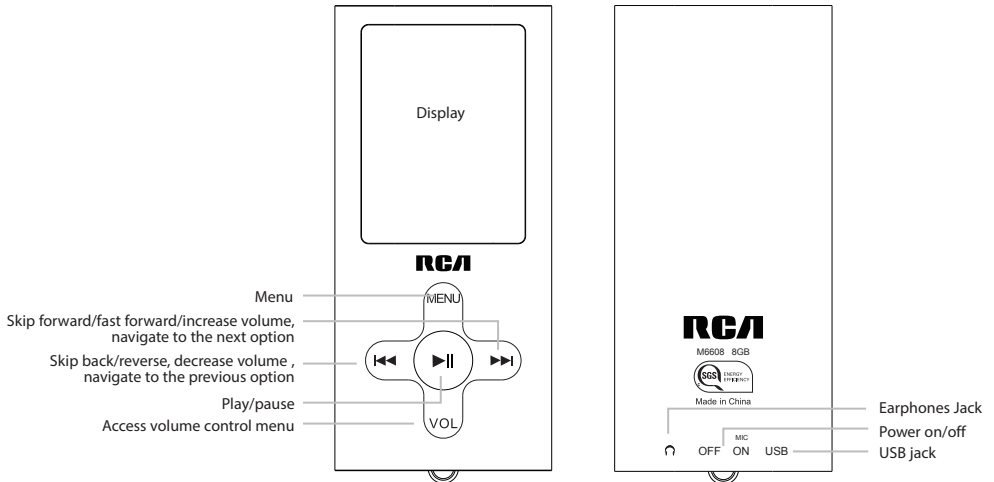
## Disconnecting the player from the PC

1. In the Windows system tray, click the **Safely Remove Hardware** icon  and then select the device with the appropriate drive letter from the list of devices.
2. When the **Safe to remove hardware** message appears, unplug the player from the PC.

**IMPORTANT:** Do not disconnect the USB connection during file transfer. Doing so may corrupt system files or the files being transferred.



# General controls



## Turning the player on and off

Slide the **ON/OFF** switch to ON to turn on the player. Slide the **ON/OFF** switch to OFF to turn off the player.

## Resetting the player

Slide the **ON/OFF** switch to OFF. Slide the **ON/OFF** switch to ON to reset the player.

# Using the menus

## Menu types

The player has two menu types:

### Home menu

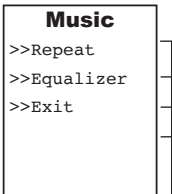
The home menu appears when you turn on the player or if you press and hold **MENU** while listening to the player. It lets you:

- Browse for and play music, video, photo and ebook files
- Record audio
- Listen to the radio
- Change the player's settings – language, time setting, etc.



### Option menu

The option menu appears if you press **MENU** at the playback screen while listening to music. It provides different options depending on what you are listening to when you press **MENU**.



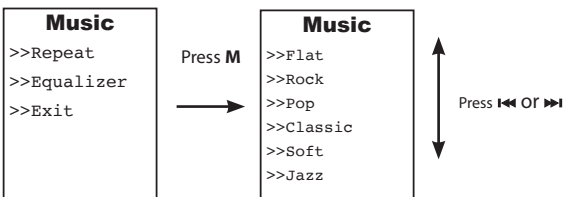
Menu items

Option Menu

## Menu navigation

When a menu is displayed:

- Press **◀** or **▶** to scroll up and down the list of menu items.
- Press **MENU** to select a menu item.
- Press and hold **MENU** to return to the previous menu.
- If the highlighted item is playable (for example, an audio file), press **MENU** to start playback.



# The Home menu

The top-level or “Home” menu is always displayed when you press and hold **MENU**. The menu options are:



## Music

Press **MENU** to enter the Music menu and choose an artist, album, genre or individual title.



## Video

Press **MENU** to enter the Video menu and choose a particular video for viewing.



## Record

Press **MENU** to enter the Record menu to start voice recording.



## Voice

Press **MENU** to enter the Voice menu to access saved voice recordings.



## FM Radio

Press **MENU** to enter the FM Radio menu and listen to the radio.



## Photo

Press **MENU** to enter the Photo menu and choose a particular image for viewing.



## Setup

Press **MENU** to enter the Settings menu, which lets you:

- Change the language of the player’s menus
- Display the space available, total memory size and firmware version.



## E-book

Press **MENU** to enter the E-book menu and choose a particular e-book for reading.

**Importante:** *The E-book reader supports .txt files only.*



## Browser

Press **MENU** to enter the Browser menu and browse all of the files on the player.



# Music

## Playing music files

The player sorts your music files by track name (title), artist, album and genre.

1. Press **◀** or **▶** to navigate to Music.
2. Press **MENU** to enter Music mode.



**Note:** In all playback modes, press and hold **MENU** to return to the menu.

## Music playback

Press <b>◀</b>	Skips to the previous file; press and hold to scan backward within a file
Press <b>▶</b>	Skips to the next file; press and hold to scan forward within a file
Press <b>⏸</b>	Starts/pauses playback; exits volume setting mode
Press <b>VOL</b>	Enters volume setting mode
In volume setting mode, press <b>◀</b> or <b>▶</b>	Increases or decreases the volume during playback
Press <b>MENU</b> during playback	Shows Repeat and Equalizer mode options
Press <b>MENU</b> when playback is paused/stopped	Shows selecting Local folder option
Press <b>MENU</b> when in Option menu	Confirm menu option
Press and hold <b>MENU</b> when in Option menu	Back to previous navigation level



**Note:** To enter volume setting mode, Press **VOL** to access the volume control menu and then press **◀** or **▶** to adjust the volume. Press **MENU** or **⏸** to exit the menu.

### Option menu (music playback)

Press **MENU** at the playback screen to show the Option menu of Repeat and Equalizer mode. Press **MENU** when playback is paused or stopped to show the Option menu of Local folder. Press **◀** or **▶** to highlight an option and then press **⏸** to confirm the selection or change the setting.

The following options are available when playback is paused or stopped:

- **Local folder** – Browses the local folder for selecting a media file to play.
- **Delete file** – Delete the selected file from the directory.
- **Delete all** – Delete all files from the directory.

The following options are available during playback:

- **Repeat** – Toggles play mode. Options available: Normal, Repeat one, Folder, Repeat Folder, Repeat all, Random, Intro
- **Equalizer** – Toggles equalizer mode. Options available: Flat, Rock, Pop, Classic, Soft, Jazz, Bass

## Music playback display



1. Equalizer mode
2. Elapsed playback time
3. Current directory
4. File type
5. File total time and file bitrate
6. Play mode
7. Volume level
8. Battery level
9. Current file number/total number of files
10. Song name, artist name and album name
11. Playback progress bar

The information provided in the playback screen depends upon the ID3 tags that have been set up for the music file.

## Video

### Playing video files

1. Press **◀◀** or **▶▶** to navigate to Video.
2. Press **MENU** to enter Video mode.
3. Press **▶||** to start video playback.

**Note:** In all playback modes, press and hold **MENU** to return to the menu.



### Video viewing

Press <b>◀◀</b>	Skips to the previous file; press and hold to scan backward within a file
Press <b>▶▶</b>	Skips to the next file; press and hold to scan forward within a file
Press <b>▶  </b>	Starts/pauses playback
When playback is paused, press <b>VOL</b>	Enters/exits volume setting mode
In volume setting mode, press <b>◀◀</b> or <b>▶▶</b>	Increases or decreases the volume during playback
Press <b>MENU</b> when playback is paused/ stopped	Shows the Option menu
Press <b>MENU</b> when in Option menu	Confirm menu option
Press and hold <b>MENU</b> when in Option menu	Back to previous navigation level

**Note:** To enter volume setting mode when playing video files, press **▶||** to pause playback and then press **VOL**. Press **◀◀** or **▶▶** to adjust the volume. To exit volume setting mode, press **▶||** again. Press **▶||** to resume video playback from the last position.



#### Option menu (video playback)

Press **MENU** when playback is paused or stopped to show the Option menu.

The following options are available:

- **Local folder** – Browses the local folder for selecting a media file to play.
- **Delete file** – Delete the selected file from the directory.
- **Delete all** – Delete all video files from the directory.
- **Repeat** – Toggles play mode. Options available: Normal, Repeat one, Folder, Repeat Folder, Repeat all, Random, Intro

Video files must be converted to .amv format for playback on your player. Use the RCA AMV Converter to convert the video files before transferring them to the player.



# Record

## Start recording

1. Press **◀▶** or **▶▶** to navigate to Record.
2. Press **MENU** to enter Record mode.
3. Press **▶▶** to start recording.

**Note:** In all playback modes, press and hold **MENU** to return to the menu.



## Recording

Press <b>▶▶</b>	Starts/pauses recording
Press and hold <b>MENU</b> or <b>▶▶</b>	Stops and saves recording
Press <b>MENU</b> when recording is stopped	Shows the Option menu
Press <b>MENU</b> when in Option menu	Confirm menu option
Press and hold <b>MENU</b> when in Option menu	Back to previous navigation level

### Option menu (record)

Press **MENU** when recording is stopped to show the Option menu. Press **◀▶** or **▶▶** to highlight an option and then press **MENU** to confirm the selection or change the setting.

The following option is available:

- **Local folder** – Browses the local folder for selecting a location to store the recording.
- **Rec type** – Selects recording type. Options available: 32 kbps, 64 kbps, 128 kbps and 256 kbps.

## Voice

### Playback recorded files

1. Press **⏮** or **⏭** to navigate to Voice.
2. Press **MENU** to enter Voice mode.
3. Press **▶||** to start voice playback.

**Note:** In all playback modes, press and hold **MENU** to return to the menu.



## Voice

Press <b>⏮</b>	Skips to the previous file; press and hold to scan backward within a file
Press <b>⏭</b>	Skips to the next file; press and hold to scan forward within a file
Press <b>▶  </b>	Starts/pauses playback; exits volume setting mode
Press <b>VOL</b>	Enters volume setting mode
In volume setting mode, press <b>⏮</b> or <b>⏭</b>	Increases or decreases the volume during playback
Press <b>MENU</b> during playback	Shows Option menu
Press <b>MENU</b> when playback is paused/stopped	To select a recorded file from local folder or delete the file.
Press <b>MENU</b> when in Option menu	Confirm menu option
Press and hold <b>MENU</b> when in Option menu	Back to previous navigation level

### Option menu (voice)

Press **MENU** at the playback screen to show the Option menu of Repeat mode. Press **MENU** when playback is paused or stopped to select a recorded file from local folder or delete the file. Press **⏮** or **⏭** to highlight an option and then press **MENU** to confirm the selection or change the setting.

The following options are available when playback is paused or stopped:

- **Local folder** – Browses the local folder for selecting a media file to play.
- **Delete file** – Delete the selected file from the directory.
- **Delete all** – Delete all video files from the directory.

The following options are available during playback:

- **Repeat** – Toggles play mode. Options available: Normal, Repeat one, Folder, Repeat Folder, Repeat all, Random, Intro

# FM Radio

The radio uses the earphones as an antenna. For better reception, extend the earphone cable as far as possible. Note that you can also adjust for noisy FM by shifting the earphone cord position.



## Playing FM radio

### To turn the radio on:

1. Press **◀** or **▶** to navigate to FM radio.
2. Press **MENU** to enter FM radio mode. The frequency screen appears.

**Note:** In all playback modes, press and hold **MENU** to return to the menu.



### To tune the radio:

- Press and hold **◀** or **▶** to start scanning through the frequency range. The player stops scanning when it detects the next station.
- Press **◀** or **▶** to step through the frequency range.

### To turn the radio off:

- Turn the player off
- Press and hold **MENU** to display the Home menu and select other modes.

### Option menu (FM Radio)

Press **MENU** at the playback screen to show the Option menu. Press **◀** or **▶** to highlight an option and then press **MENU** to confirm the selection or change the setting.

The following options are available:

- **Save** – To save the current station as a preset station.
- **Record** – To record the current station and enter the Record mode.
- **Delete** – To delete a preset station.
- **Delete all** – To delete all preset stations.
- **Auto search** – To start auto searching.
- **Normal band** – To switch to normal band.
- **Japan band** – To switch to Japan band.
- **Exit** – To exit the radio menu.

## Storing and recalling preset stations

You can store up to 20 preset stations in the player.

### To store the currently playing station as a preset:

1. Press **MENU** to display the Option menu.
2. Press **◀** or **▶** to highlight **Save** and then press **MENU**. If all 20 preset station numbers are occupied, the player will not store the new selected station.

### To delete a preset station:

1. Press **MENU** to display the Option menu.
2. Press **◀** or **▶** to highlight **Delete** and then press **MENU**.
3. Press **▶||** to toggle to the desired preset station and then press **MENU** to delete the station.

**To listen to a preset station:**

When the radio is playing, press ►|| to select a desired preset station.

## Recording FM radio

You can record the radio and play back recordings as well as copy the recordings (WAV files) to your PC.

**To record the currently playing radio station:**

1. Press **MENU** to display the Option menu.
2. Press ◀◀ or ▶▶ to highlight **Record** and then press **MENU**. This will enter Record mode. See the Record section (page 19) for more details.

## Playing back FM radio recordings

**To play back a recording:**

1. Press ◀◀ or ▶▶ to navigate to Voice.
2. Press **MENU** to enter Voice mode.
3. Press ◀◀ or ▶▶ to navigate to a desired file. Press ►|| to start voice playback.

# Photo

## Viewing pictures

1. Press **◀** or **▶** to navigate to Photo.
2. Press **MENU** to enter Photo mode.
3. Press **◀** or **▶** to highlight a picture and press **▶||** to view selected image.

**Note:** In all playback modes, press and hold **MENU** to return to the menu.



## Viewing

Press <b>◀</b>	Skips to the previous file
Press <b>▶</b>	Skips to the next file
Press <b>▶  </b>	Enters/exits playback mode
Press <b>MENU</b> when playback is paused/ stopped	Shows the Option menu
Press <b>MENU</b> when in Option menu	Confirm menu option
Press and hold <b>MENU</b> when in Option menu	Back to previous navigation level

### Option menu (picture viewing)

Press **MENU** when playback is paused or stopped to show the Option menu. Press **◀** or **▶** to highlight an option and then press **MENU** to confirm the selection or change the setting.

The following options are available:

- **Local folder** – Browses the local folder for selecting a media file to play.
- **Playback set** – Selects playback mode. Options available: Manual Play and Auto play.
- **Delete file** – Delete the selected file from the directory.
- **Delete all** – Delete all video files from the directory.



## Reading E-books

1. Press **◀◀** or **▶▶** to navigate to E-Book.
2. Press **MENU** to enter E-Book mode.
3. Press **◀◀** or **▶▶** to highlight a text file and press **▶▶▶** to view selected file.

**Note:** The Text Reader only supports .txt files.



## Reading

Press <b>◀◀</b>	Skips to the previous page
Press <b>▶▶</b>	Skips to next page
Press <b>▶▶▶</b>	Enters/exits reading mode
Press <b>MENU</b> during reading mode	Shows Bookmark options
Press <b>MENU</b> when exits reading mode	Shows Local folder and Playback set options
Press <b>MENU</b> when in Option menu	Confirm menu option
Press and hold <b>MENU</b> when in Option menu	Back to previous navigation level

### Option menu (text reading)

Press **MENU** at the reading screen to show the Option menu of Bookmark. Press **MENU** when reading mode is exited to show the Option menu of Local folder and Playback. Press **◀◀** or **▶▶** to highlight an option and then press **MENU** to confirm the selection or change the setting.

The following options are available when reading mode is exited:

- **Local folder** – Browses the local folder for selecting a media file to play.
- **Delete file** – Delete the selected file from the directory.
- **Delete all**– Delete all video files from the directory.

The following options are available in the reading mode:

- **Bookmark select** – Selects bookmarks created.
- **Bookmark delete** – Deletes bookmarks created.
- **Bookmark add** – Creates bookmarks.

# Settings

## Changing the Player's settings

1. Press **⏪** or **⏩** to navigate to Settings.
2. Press **MENU** to enter Settings mode.
3. Press **⏪** or **⏩** to highlight an option and then press **MENU** to confirm the selection or change the setting.

**Note:** In all playback modes, press and hold **MENU** to return to the menu.



## Language

- Changes the language of the player menus.
  - Options: English, French, Spanish, Portuguese, and many others

## Memory info

- Displays the amount of space available and total memory size.

## Firmware version

- Displays the firmware version.

## Additional information

### Tips and troubleshooting

#### **Cannot delete files on the player.**

- You can delete files on the player using your computer.
  - Connect the player to your computer.
  - Open the player in Windows Explorer and navigate to the folder containing the files.
  - Select the files you want to remove and then press the Delete key on the keyboard of your PC.
- For deleting files from the player, refer to Option menu from page 16-25 for details.

#### **Player repeats same tracks or all tracks.**

- Repeat play is turned on. Press **MENU** during playback to show the Option menu and select Normal in the Repeat menu.

#### **Audio distorted at high volume.**

- Change the Equalizer mode to Flat.
- Turn down the volume.

#### **The audio tracks on my player keep skipping or popping.**

- You'll need to rip the audio track again– make sure you close all other applications on your PC when you record.
- Try ripping with the Error Correction setting turned on.

#### **Player turns itself off.**

- Your player turns itself off if you leave it in pause mode or navigation mode for 3 minutes.

#### **The player cannot be turned on.**

- Battery is empty, please recharge.
- Slide the **ON/OFF** switch to OFF. Slide the **ON/OFF** switch to ON to reset the player.
- Please go to [www.rcaaudiovideo.com](http://www.rcaaudiovideo.com) for more details.

#### **Player does not respond to key presses.**

- If the player stops operating properly, you can reset it by sliding the **ON/OFF** switch to OFF. Then slide the **ON/OFF** switch to ON to reset the player.
- This player may temporarily cease to function if subjected to electrostatic disturbance. To resume normal operation, it may be necessary to cycle the power by sliding the **ON/OFF** switch to OFF. Then slide the **ON/OFF** switch to ON to reset the player.

#### **Player cannot play WMA songs.**

- Secure music downloads are not supported by this player. Please make sure to download songs without DRM protection (Digital Rights Management).

**The player takes a long time to read files in a folder.**

- File reading may take longer if too many files are put in a single folder. Re-organize your files into a number of folders.

**Song information is not showing correctly.**

- Song information may not match your current player's language setting. Change the language setting.

**Cannot view photo files.**

- The player only supports .jpg file extensions.
  - NOTE: Does not support such formats as .bmp, .tiff, .jpeg, etc.
- Photo files must be transferred to the "PHOTO" folder in the player for proper playback.

**Cannot play video files.**

- All video files must be converted by RCA AMV Converter software.
  - NOTE: Your PC must be able to play the video file in Windows Media Player to ensure the proper codecs are installed for video conversion.
- Video files must be transferred to the "VIDEO" folder in the player for proper playback.

**Cannot play E-book files.**

- The player only supports .txt file extensions.
- Text files must be transferred to the "EBOOK" folder in the player for proper playback.

**Cannot play AAC songs.**

- AAC songs are not supported by this player.

**The player reports that it is full.**

- The internal memory of the player has been filled to capacity.

**Cannot playback tracks on the player.**

- Make sure audio tracks are encoded in the mp3 or Windows Media formats at supported bitrates.
- Bitrates support by the player:
  - mp3 – 32 to 320 kbps
  - wma – 48 to 192 kbps
- WMA files may be DRM protected and this player does not support playback of protected files.

**Cannot playback songs downloaded from my paid music service provider subscription service.**

- Secure music downloads are not supported by this player. Please make sure to download songs without DRM protection (Digital Rights Management).

**Cannot transfer subscription music content to the player.**

- Secure music downloads are not supported by this player. Please make sure to download songs without DRM protection (Digital Rights Management).

## Visiting RCA website

Please visit [www.rcaaudiovideo.com](http://www.rcaaudiovideo.com) for:

- Product registration
- Latest software and firmware
- User manual
- Frequently asked questions (FAQ)
- Customer service and technical support information

## Technical specification

Power source:

- Built-in rechargeable lithium-polymer battery 3.7V
- USB power (from a computer via the supplied USB Mini connector cable)

## Specifications

### Hardware

- Dimensions: 90mm H, 40mm W, 9mm D
- Unit Weight: 24g
- Stereo Headphones jack
- Mini USB Connection Jack
- Battery Operated: Rechargeable lithium battery.

### USB Drive

- External USB Drive: When connected to a computer via USB, the player is capable of storing any file type allowing the user a fast, convenient method of storing, retrieving, and transferring files. This includes word processing files, presentations, spreadsheets and any other computer files.
- Capacity: 8GB
- Connection: USB 2.0, Hi-speed capable

### Software

- Includes the AMV Converter software.

## Warranty information

### 12 Month Limited Warranty Applies to RCA Portable Media Players

Voxx Accessories Corporation (the "Company") warrants to the original retail purchaser of this product that should this product or any part thereof, under normal use and conditions, be proven defective in material or workmanship within 12 months from the date of original purchase, such defect(s) will be repaired or replaced with new or reconditioned product (at the Company's option) without charge for parts and repair labor. To obtain repair or replacement within the terms of the warranty, the product is to be delivered with proof of warranty coverage (e.g. dated bill of sale), specification of defect(s), transportation prepaid, to an approved warranty station. For the location of the nearest warranty station to you, call toll-free to our control office: 1-800-645-4994.

This Warranty does not extend to the elimination of externally generated static or noise, to correction of antenna problems, loss/interruptions of broadcast or internet service, to costs incurred for installation, removal or reinstallation of product, to corruptions caused by computer viruses, spyware or other malware, to loss of media, files, data or content, or to damage to tapes, discs, removable memory devices or cards, speakers, accessories, computers, computer peripherals, other media Players, home networks or vehicle electrical systems. This Warranty does not apply to any product or part thereof which, in the opinion of the Company, has suffered or been damaged through alteration, improper installation, mishandling, misuse, neglect, accident, or by removal or defacement of the factory serial number/bar code label(s). THE EXTENT OF THE COMPANY'S LIABILITY UNDER THIS WARRANTY IS LIMITED TO THE REPAIR OR REPLACEMENT PROVIDED ABOVE AND, IN NO EVENT, SHALL THE COMPANY'S LIABILITY EXCEED THE PURCHASE PRICE PAID BY PURCHASER FOR THE PRODUCT. This Warranty is in lieu of all other express warranties or liabilities. ANY IMPLIED WARRANTIES, INCLUDING ANY IMPLIED WARRANTY OF MERCHANTABILITY, SHALL BE LIMITED TO THE DURATION OF THIS WRITTEN WARRANTY. ANY ACTION FOR BREACH OF ANY WARRANTY HEREUNDER INCLUDING ANY IMPLIED WARRANTY OF MERCHANTABILITY MUST BE BROUGHT WITHIN A PERIOD OF 24 MONTHS FROM DATE OF ORIGINAL PURCHASE. IN NO CASE SHALL THE COMPANY BE LIABLE FOR ANY CONSEQUENTIAL OR INCIDENTAL DAMAGES FOR BREACH OF THIS OR ANY OTHER WARRANTY. No person or representative is authorized to assume for the Company any liability other than expressed herein in connection with the sale of this product.

Some states do not allow limitations on how long an implied warranty lasts or the exclusion or limitation of incidental or consequential damage so the above limitations or exclusions may not apply to you. This Warranty gives you specific legal rights and you may also have other rights which vary from state to state.

Illustrations contained within this publication are for representation only and subject to change.

The descriptions and characteristics given in this document are given as a general indication and not as a guarantee. In order to provide the highest quality product possible, we reserve the right to make any improvement or modification without prior notice.



For Customer Service  
Visit Our Website At  
**[www.rcaudiovideo.com](http://www.rcaudiovideo.com)**  
Product Information, Photos,  
FAQ's, User Manual

©2020 VOXX Accessories Corporation  
Indianapolis, IN  
Trademark(s) ® Registered

M6608 IB 01